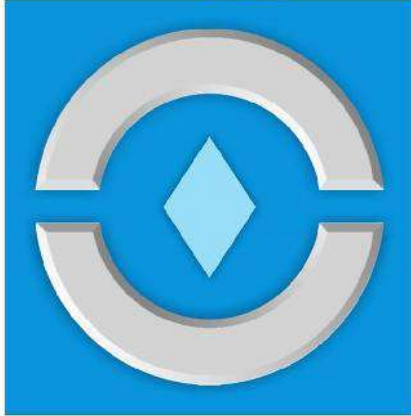


iSEAL-P

Dust & Moisture Proof Luminaire

نور عمان



NOOROMAN



ISEAL-P Dust & Moisture Proof Luminaire

Application

Suitable for Indoor/Covered Outdoor applications where high ingress protection and high efficacy are required.

Technical Data

Body:

- High quality injected coextruded polycarbonate
- High quality injected polycarbonate end caps

Diffuser:

- UV stabilized injected coextruded polycarbonate diffuser

Ingress protection:

- IP65

Gasket:

- High quality specially designed gasket with durability against heat and pressure

Clamp Characteristic:

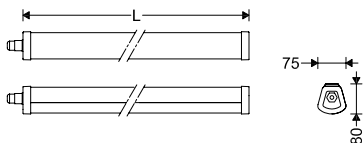
- Stainless steel with easy and safe installation of the luminaire without tool requirement

Electrical components:

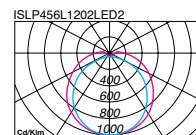
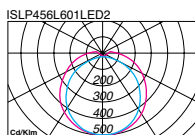
- High quality constant current LED driver (PF > 0.9)
- High efficacy LED modules
- Lumen Maintenance (L80) > 50,000hrs
- CRI > 80
- Single core solid conductor made of copper with PVC insulation
- Polyamide cable gland



Cat. No.	Power Consumption (W)	Luminous Flux (lm)	Efficacy (lm/W)	Color Temperature (K)	L (mm)	W (kg)
ISLP456L601LED2840	18	2200	122	4000	600	0.6
ISLP456L601LED2865	18	2200	122	6500	600	0.6
ISLP456L1202LED2840	37	4500	122	4000	1200	1.2
ISLP456L1202LED2865	37	4500	122	6500	1200	1.2



Low Flicker





GPB4-Bracket, GPB5-Bracket, GPB6-Bracket

Dacromet coated pole bracket for poles in 4,5, or 6-cm diameter



GDMRC-20

Mounting clamp Rod M10



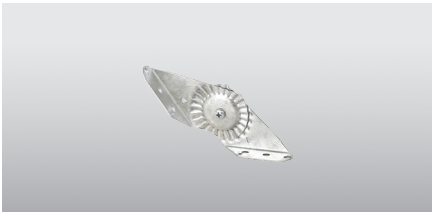
G440KSU

Suspension kit



G440EKSU1-S

Electrical suspension kit with 3-pole special wire terminal in silver color




GWA1-Bracket

Galvanized wall mounting brackets with graded angles

Mounting Symbols

 Surface mounting

 Suspension