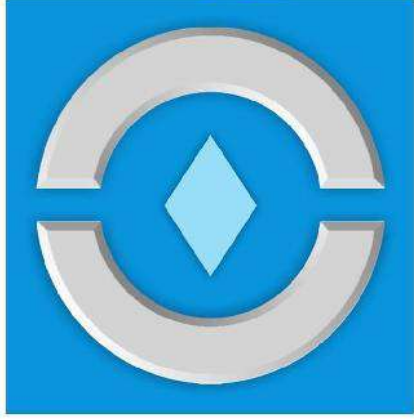


# LINEAR

Recessed Continuous Light Bar

نور عمان



**NOOROMAN**



Recessed Continuous Light Bar

**LINEAR** Recessed is designed and manufactured by Noor for continuous light bar application. Aesthetically designed **LINEAR** is offered in LED versions with unparalleled performance.

Uniform light distribution, energy saving, glare control are among the highlights of this luminaire.

**LINEAR** is designed and manufactured under Noor pre-cise quality control according to European norms: IEC 60598 and IEC 62722-2-1.

**Application**

Suitable for modern offices and commercial buildings where energy saving, uniform light distribution, and glare control in the form of continuous light bar are required such as modern offices, banks, universities, shopping malls, hospitality, ...

**Technical Data**

**Body:**

- White powder coated extruded aluminium profiles

**Diffuser:**

- UV stabilized high quality satin white PMMA (Acrylic) outer diffuser for glare control and uniform light distribution and PMMA extruded profile cover mounted on the LED module

**Mounting bracket:**

- Sturdy galvanized mounting clamps with simple and safe mechanism for mounting the luminaire on gypsum false ceilings

**Electrical components:**

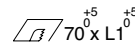
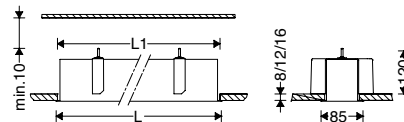
- PF > 0.9
- High efficacy LED modules
- Lumen Maintenance (L70) > 90,000hrs
- Single core solid conductor made of copper with PVC insulation
- 3 pole special polyamide wire terminals
- Cable thru wiring capability
- Looping capability

**Ordering Options:**

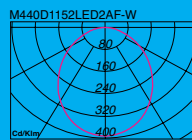
- Optional high power factor dimmable driver for 10-1v
- Emergency battery pack (upon request)
- Possibility to order the body in black color in some models



Cat. No.	L	L1	W (kg)
440D601LED2AF-W	590	576	2.0
440D902LED2AF-W	1710	1696	2.6
440D1152LED2AF-W	870	856	4.0
440D1453LED2AF-W	1995	1978	5.0
440D1703LED2AF-W	1150	1136	6.0
440D2004LED2AF-W	2285	2270	6.5
440D2304LED2AF-W	1430	1418	7.5



**Ordering options:**

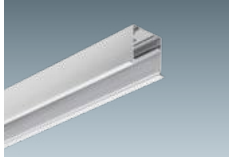


Cat. No.	Power Consumption (W)	Luminance Flux (lm)	Efficiency (lm/W)	Color Temperature (K)
440D601LED2AF-W	21	1800	86	4000
440D902LED2AF-W	29	2800	97	4000
440D1152LED2AF-W	39	3600	92	4000
440D1453LED2AF-W	49	4500	92	4000
440D1703LED2AF-W	58	5500	95	4000
440D2004LED2AF-W	68	6500	96	4000
440D2304LED2AF-W	78	7000	90	4000

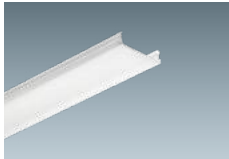
**Mounting Symbols**

Gypsum false ceiling

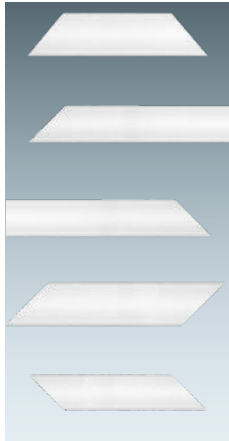
Recessed wall mount



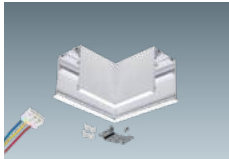
440D283-W	White powder coated aluminium profiles in 283cm lengths
-----------	---



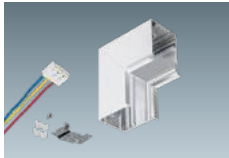
440DAF283	Satin white PMMA (Acrylic) outer diffuser in 283cm lengths
-----------	--



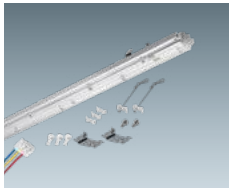
440DAFTR150	Trapezoid shaped satin white Acrylic diffuser (TR6.5) for LINEAR with 150cm length
440DAFTRL150	Perpendicular trapezoid (pointed to left) satin white Acrylic diffuser (TR6.5) for LINEAR with 150cm length
440DAFTRL100	Perpendicular trapezoid (pointed to left) satin white Acrylic diffuser (TR6.5) for LINEAR with 100cm length
440DAFTRR150	Perpendicular trapezoid (pointed to right) satin white Acrylic diffuser (TR6.5) for LINEAR with 150cm length
440DAFTRR100	Perpendicular trapezoid (pointed to right) satin white Acrylic diffuser (TR6.5) for LINEAR with 100cm length
440DAFPRL150	Parallelogram shaped (pointed to left) satin white Acrylic diffuser with two pairs of parallel sides (PR6.5) for LINEAR with 150cm length
440DAFPRR150	Parallelogram shaped (pointed to right) satin white Acrylic diffuser with two pairs of parallel sides (PR6.5) for LINEAR with 150cm length



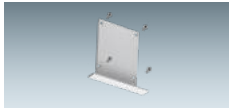
440DLJ3-W	L-shaped white powder coated aluminium joiner for connecting the profiles to 90° angle with 3-pole special wire terminal
-----------	--



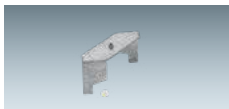
440DWJ3-W	L-shaped white powder coated aluminium joiner to continue the luminaire profiles from ceiling to wall with 3-pole special wire terminal
-----------	---



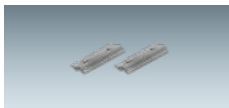
440DK451LED2TW325	Electrical components board for LED light source with 3-pole special wire terminal (length: 45cm)
440DK601LED2TW325	Electrical components board for LED light source with 3-pole special wire terminal (length: 60cm)
440DK752LED2TW325	Electrical components board for LED light source with 3-pole special wire terminal (length: 75cm)
440DK902LED2TW325	Electrical components board for LED light source with 3-pole special wire terminal (length: 90cm)
440DK1152LED2TW325	Electrical components board for LED light source with 3-pole special wire terminal (length: 115cm)
440DK1703LED2TW325	Electrical components board for LED light source with 3-pole special wire terminal (length: 170cm)



440DEC-W	White powder coated aluminium end caps of profiles
----------	--



DMRC-13	Galvanized steel mounting brackets for mounting the luminaire in gypsum false ceilings with different thickness
---------	---



440DKC	Extruded aluminium connection joiner for connecting two profiles together
--------	---