

NL05

30W-400W LED Street Light Series.

NL05 is a street light series with a lens modular design. It includes four different sizes and models, with a power range of 30W-400W. The modular lens design allows for flexible combinations with 2835 and 5050 LEDs, providing versatile lighting options. Strom street lights are suitable for a wide range of applications, including country roads, urban roads, highways, parks, industrial parks, plazas, docks, and outdoor parking lots.



IP66
Wet Location



IK08
Rating



5 YEAR
WARRANTY



Smooth Surface

A smooth surface reduces dust accumulation, which is suitable for harsh environments with high wind, sand, and rain or snow. It uses a corrosion-resistant coating, making it suitable for long-term usage in coastal areas with high air corrosion or special circumstances.



30W/40W/60W
/90W/100W

120W/150W

180W/200W/240W

300W/400W

Tool-free for Maintenance

Street lights can be accessed without the need for any tools. It utilizes a convenient snap fastener, providing easy and tool-free access for maintenance or replacement of electronic components.



Dual Waterproof Design

The light fixture uses a one-piece waterproof silicone rubber ring with an IP66 waterproof rating. A built-in breath valve helps maintain balanced air pressure inside and outside the light. Ensures that even in rainy or humid conditions, the light does not accumulate water or fog, ensuring high-quality illumination and minimizing light degradation.

Smart Design

The heat sink and the cover are separable, which is more convenient for maintenance.

Safety Rope

Safety rope is designed to securely fasten the street light to the installation pole, prevent the risk of accidental falls, provide an additional layer of protection, and ensure the reliability of the fixture.

Knife Switch

The knife switch cut the power off immediately when the power compartment opened, ensuring the safety of workers.

Type II, Type III, Type IV Available

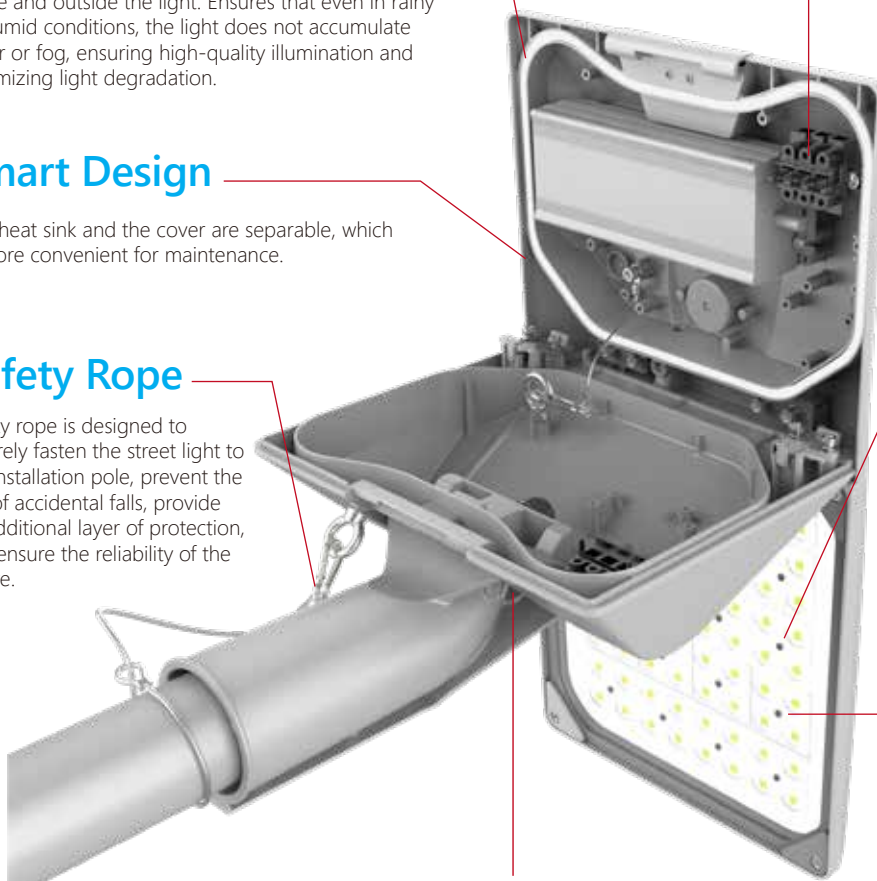
Different light angles, such as Type II and Type III, are available for two-lane or three-lane roads.

Modular Design

Modular lens allowing compatibility with both 2835 and 5050 led beads. This makes it not only simplifies maintenance but also allows for easy disassembly and installation. Additionally, it helps save on mold costs by eliminating the need for separate molds for each type of lens bead.

Lens+Glass

With PC lens + glass, resulting in higher protective performance. The glass reduces the impact of sunlight on the PC lens material, preventing it from yellowing or becoming brittle. This design helps reduce light degradation and ensures a more stable performance of the entire light fixture.



The light fixture has $\pm 20^\circ$ adjustability, allowing it to match different pole angles





Parameters

Model No.	NL05-(30W-100W)	NL05-120W/150W	NL05-180W/200W/240W	NL05-300W/400W
Watt	30W/40W/60W/90W/100W	120W/150W	180W/200W/240W	300W/400W
Light Efficiency	30-240W: 130Lm/W-150Lm/W(@4000K, Ra70), 300-400W: 130Lm/W(@4000K, Ra70)			
Lumen Flux(±10%)	3,900-15,000Lm	15,600-22,500Lm	23,400-36,000Lm	39,000Lm/52,000Lm
CCT	3000K/4000K/5000K/5700K			
Beam Angle	T2, T3, T4			
CRI	≥70			
Percent Flicker[%]	< 15%			
SDCM	≤3			
Input Voltage	AC220-240V			
Power Factor	≥0.95			
THD	≤15%			
Surge Protection	10KV			
Protection against electric	Class I			
IP (Environmental location of luminaries)	IP66/Wet location			
IK	IK08			
Operating Temp Ranger	-40°C ~ +55°C @ outdoor / -104°F ~ +131°F @ outdoor			
Intelligent control	1-10V Dimming			
Lifetime	50,000H(L80B20@25°C)			
Weight (kg/lbs)	5.23kg-5.50kg/11.5lbs-12lbs	6.50kg/14.3lbs	8.1kg-8.20kg/17.80lbs-18.0lbs	10.2kg-10.5kg/22.5lbs-23.0lbs
Dimension(mm/in)	470*260*116mm 18.5*10.2*4.6in	520*280*116mm 20.5*11*4.6in	570*320*116mm 22.4*12.6*4.6in	625*335*136mm 24.6*13.2*5.4in
Warranty	5 Years			
Certificate	CE / CB / ENEC / RoHS			
Specification	LED: Lumileds Driver: Sosen, Inventronics			
Material	Structure: Die-casting/High Thermal Conductivity AL Finish: Powder coated Lens: PC+Tempered Glass Color: Gray			



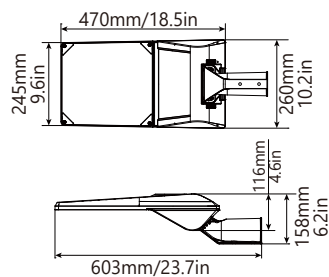
MINI

PRO

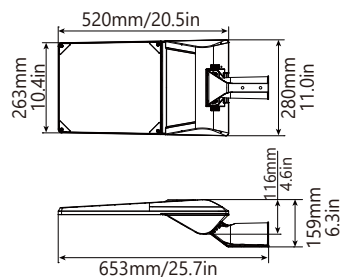
PLUS

MAX

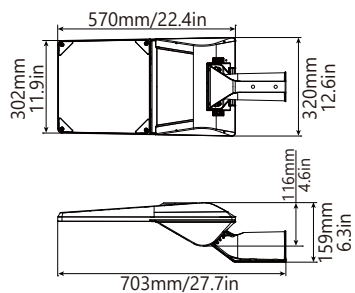
Dimension (mm)



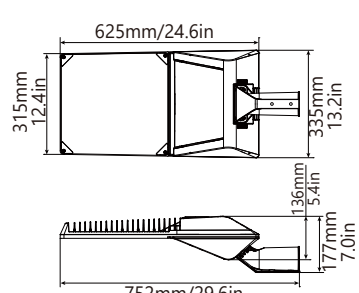
Mini



Pro

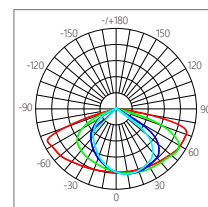


Plus

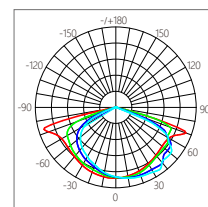


Max

Photometric Diagrams



T2



T3